

# TRANSCENDING TYPE

PRESS RELEASE

ARCHITECTURAL RECORD CURATES THE EXHIBITION

## TRANSCENDING TYPE

La Biennale di Venezia

9th International Architecture Exhibition

U.S. Pavilion 2004

Venice, Italy

September 12 – November 7, 2004

The Bureau of Educational and Cultural Affairs of the U.S. Department of State has chosen *Architectural Record* to curate the U.S. Pavilion exhibition at the Venice Architecture Biennale opening in September 2004. Entitled *Transcending Type*, the exhibition, developed by editors of the New York-based magazine, will feature six U.S. firms in the vanguard of contemporary design. Each will explore new forms and uses for iconic modern building types, providing a fresh perspective on structures that have been stereotyped and replicated globally. Drawings, digital media, and three-dimensional installations will present a 21st-century vision for the shopping center, residential highrise, sports arena, parking garage, spiritual space, and highway interchange.

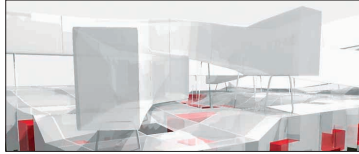
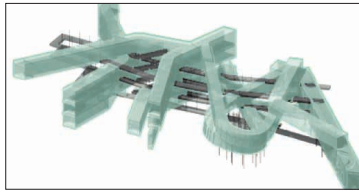
Robert Ivy, FAIA, editor in chief of *Architectural Record*, will serve as the commissioner for the exhibition, which will be on view at the U.S. Pavilion in the Giardini di Castello, from September 12 to November 7, 2004. The program is part of the 9th International Architecture Exhibition of the Venice Biennale — "*Metamorph*," a theme that signals the critical transformations in architecture over the recent past, as well as the present and future. Kurt W. Forster is the overall Biennale Director.

**Exhibition teams and projects at the U.S. Pavilion include:**

- **George Yu Architects, Los Angeles:** SHOPPING CENTER
- **Kolatan/MacDonald Studio, New York:** RESIDENTIAL HIGHRISE
- **Studio/Gang/Architects, Chicago:** SPORTS STADIUM
- **Lewis.Tsurumaki.Lewis, New York:** PARKING GARAGE
- **Predock\_Frane, Los Angeles:** SPIRITUAL SPACE
- **Reiser + Umemoto, New York:** HIGHWAY INTERCHANGE

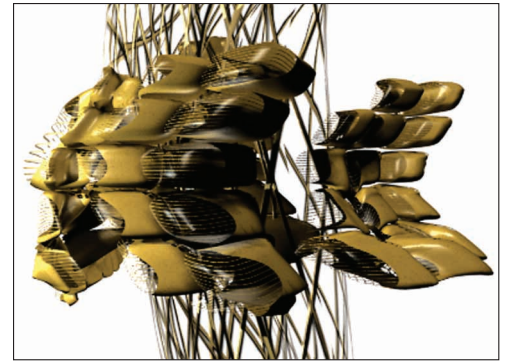
## George Yu Architects, Los Angeles

The firm presents a new prototype for shopping centers by weaving together elements of conventional commercial spaces with a landscape of terraced residential buildings and public park space. The installation model, which floats nine feet above the gallery floor and is suspended from tensioned-steel cables, contains transformable spatial types that accommodate a wide variety of programs.



## Kolatan/MacDonald Studio, New York

The "Resi-Rise" project is an example of "vertical urbanism," which consolidates living and working spaces into stacked pods, growing and changing over time. The pods, customized for each tenant and attached to a fiber-reinforced composite frame, allow the building to evolve as each piece is added (or taken away when tenants leave). The pods themselves are made of plastics that undergo molecular restructuring with stress, smart glass that responds to light, and woven-glass-fiber wall coverings.



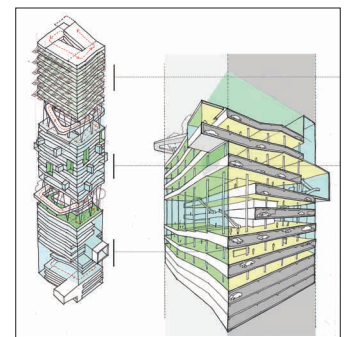
## Studio/Gang/Architects, Chicago

The firm's project explores the potential of a stadium to both accommodate throngs of people and disappear when not in use. The proposed structure would employ a kinetic seating bowl surrounded by a series of transforming elements, many constructed into buildings in the surrounding cityscape. The team's exhibition model will fold and unfold accordingly.



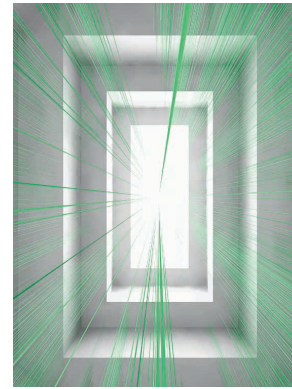
## Lewis.Tsurumaki.Lewis, New York

Called "Parking Sections," this project brings parking together with retail, commercial, and residential components. A "New Suburbanism" section will overlap suburban houses with big box stores, and intersect parking garages with athletic fields. "TourBus Hotel" will use the logistics of European bus tours as a catalyst for a hotel redolent of memory and anticipation. "Park Tower" will employ hydrogen technology to help create a drive-up skyscraper where a double-helical system combines a continuous parking surface with stacked retail, office, and residential zones.



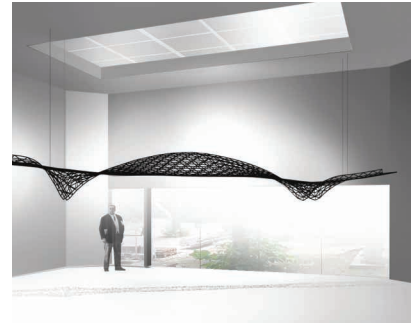
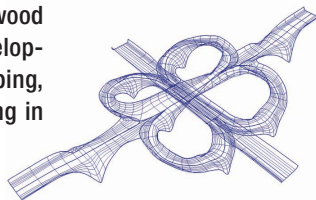
## Predock\_Frane, Los Angeles

Called "Acqua Alta," this project uses a "pixelated" field of 5,000 nearly invisible filaments to evoke the high-tide water patterns of flooding in Venice. The resulting space is meant to encourage contemplation, spirituality, and reflection by immersing visitors in the natural and evolutionary forces that shape this historic and mysterious city.



## Reiser + Umemoto, New York

This proposal redefines a generic highway interchange by engaging the space between the road and its adjacent territories. The new interchange, which includes a bridge made of laminated-wood members, will incorporate residential development, pedestrian circulation, and landscaping, fostering a sense of urbanism usually lacking in such infrastructure projects.



### For exhibition schedule, hours, and related activities, contact:

The Biennale Offices, Alessandra Santerini, Press Attaché  
tel 39-041-5218846-716;  
fax 39-041-2411407-5218704  
alessandra.santerini@labiennale.org or www.labiennale.org

### For further information on *Transcending Type*, contact: *Architectural Record* exhibition committee co-chairs:

Suzanne Stephens (tel 212-904-3698) [suzanne\\_stephens@mcgraw-hill.com](mailto:suzanne_stephens@mcgraw-hill.com)  
Clifford Pearson (tel 212-904-2011) [pearsonc@mcgraw-hill.com](mailto:pearsonc@mcgraw-hill.com)

### For Media Contact:

Sam Lubell (tel 212-904-3450) [sam\\_lubell@mcgraw-hill.com](mailto:sam_lubell@mcgraw-hill.com)

### State Department Media Contact:

Nicole Deaner (tel 202-203-7613) [deanerna@state.gov](mailto:deanerna@state.gov)

### Curated by the editorial staff of *Architectural Record*, McGraw-Hill Construction, McGraw Hill Companies

Co-chairs: Clifford Pearson and Suzanne Stephens  
Project team: Sarah Amelar; William Weathersby, Jr.; Sam Lubell; Jane Kolleeny; Rita Catinella; Audrey Beaton; Nick Olsen  
Graphics: Anna Egger-Schlesinger, Clara Huang  
Curatorial Consultant: Christian Bruun

Support for *Transcending Type* at the U.S. Pavilion has been provided by:

**Autodesk** (Patron)  
**DuPont Corian** (Benefactor)  
**Zebra Imaging** (Contributor)  
**L.M. Scofield** (Supporter)  
**Car-Freshner Corporation** (Supporter)  
**ZCorp** (Supporter)  
**Montenidoli Wines** (Supporter)

Special contributions: **Craig Robins, Leah Zell Wanger, Elise Jaffe and Jeffrey Brown**

Special thanks to: **The Architectural League of New York**

Supporting architectural firms:

**Beyer Blinder Belle, Fox & Fowle Architects, Gensler, Kaplan McLaughlin Diaz, Kohn Pedersen Fox Associates, Costas Kondylis and Partners, Murphy/Jahn Architects, NBBJ, Pei Cobb Freed & Partners, Cesar Pelli & Associates, Perkins Eastman Architects**

### About *Architectural Record* and McGraw-Hill Construction:

*Architectural Record*, founded in 1891, is the oldest and largest architectural journal in the United States. The magazine of the American Institute of Architects, it reaches almost 300,000 readers a month. *Record* is published by McGraw-Hill Construction, part of The McGraw-Hill Companies (NYSE:MHP), a leading global information services provider. McGraw-Hill Construction connects people, projects, and products across the design and construction industry. From project and product information to industry news, trends, and forecasts, McGraw-Hill Construction offers the tools, resources, and applications that help the design and construction industry save time, money, and energy, especially through the new McGraw-Hill Construction Network. Encompassing *Architectural Record*, *Engineering News-Record (ENR)* and eleven regional publications, as well as two industry information leaders, Dodge and Sweets, McGraw-Hill Construction serves more than one million customers within the \$4 trillion global construction community. For more information, visit [www.construction.com](http://www.construction.com). Additional information about The McGraw-Hill Companies is available at [www.mcgraw-hill.com](http://www.mcgraw-hill.com).